



## Specifications

### Minimum System Requirements:

Processor: 1 GHz or faster  
 System RAM: 2 GB or more if using large database  
 Hard drive: 30-50 MB free  
 Video: 2 MB PCI  
 \*\*Operating system: Windows® 7, 8, or 10. Server 2008, 2008 R2, 2012, 2012 R2 and 2016  
 CD-ROM: 8x or higher  
 Screen resolution: 1024 x 768 pixels min.

### Communication to Scale:

PLU  
 Price changes  
 Nutrition  
 Extra text messages  
 Coupon messages  
 Keyboard presets  
 Key images (SR-2000A & Uni-9)  
 Customer display graphics (Uni-5, 7, & 9)  
 Scrolling messages  
 Sales campaigns  
 Data backup  
 Remote diagnostics  
 Label creation

### Totals from Scale:

PLU production  
 Daily  
 Weekly  
 Hourly  
 Operator

## ScaleLink Pro 5

### Scale Management Software

Sophisticated PLU management made simple. ScaleLink Pro 5 joins individual scales to in-store computer/POS servers, as well as to central hosting computer networks.

Compatible with Windows® Professional-level operating systems, ScaleLink Pro 5 is loaded with features that simplify data management and product control.

Enter and maintain item data and price changes. Import and export ASCII delimited text files for seamless integration and continued operation.

Set up zone pricing for multiple store locations to multiple scales. Automatic price distribution to all scales allows fast response to competitive pricing.

By using password protection and user profiles, store managers determine who can make changes and who can simply view screens.

ScaleLink Pro 5 is priced far less than similar scale management software – yet with an array of reporting capabilities and powerful item updating tools, tracking product movement has never been easier.

## Standard Features

- TCP/IP Ethernet and RS-232 communication
- Scheduler provides automated communications
- Nutritional support including *trans* fat
- Import/export ASCII delimited text files
- Export production totals data
- PLU search by name, number or POS code
- Customizable PLU entry screen
- Left side menu tree design/layout/format
- Price and tare weight zones
- Create and edit scale touchscreen pages
- Print scale operator keysheets
- Password protection and user profiles
- Customizable PLU report
- One database file per department
- Supports AC-4000 family, AC-3000\* family, DP-3000\*, WPL-3000\*, OMNi-3000\*, BC-4000, SR-2000a, IL-2000SA, IL-EMZ, IP-EMZ, IP-Ai, WIL Acro-II, OMNi-4000, Uni-3, Uni-5, Uni-7, Uni-9, WM-Nano, WM-4000 and WM-Ai

### Operates on these platforms:

- Microsoft Windows® 7, 8 or 10. Server 2008, 2008 R2, 2012, 2012 R2 and 2016\*\*

PART #	MODEL
160259	ScaleLink Pro 5, Version 2.x

\* 3000 series scales require master board/MSCU option.

\*\*Windows® Home and Starter editions and Apple OS not supported.

14-day trial of ScaleLink Pro 5 can be downloaded from [www.ricelake.com/retail](http://www.ricelake.com/retail).

Software key is provided after online registration is completed.

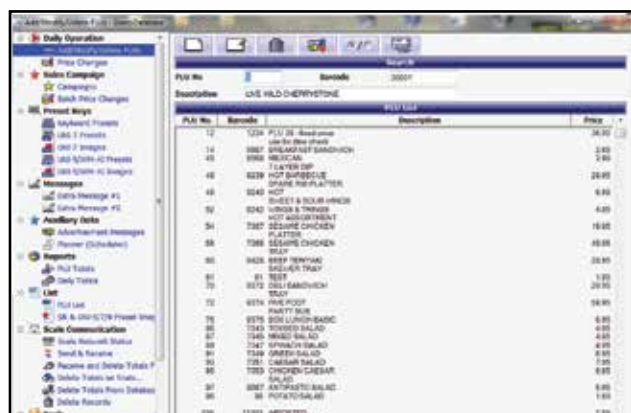
Windows is a registered trademark of Microsoft Corporation.

# ScaleLink Pro 5

Scale Management Software

PART #	MODEL/DESCRIPTION	PRICE
160259	ScaleLink Pro 5 software CD, license file purchased separately	Consult
152628*	ScaleLink Pro 5 license file, one license required per computer	Consult
170485*	ScaleLink Pro 5, client license, replacement license, one license required per computer	Consult

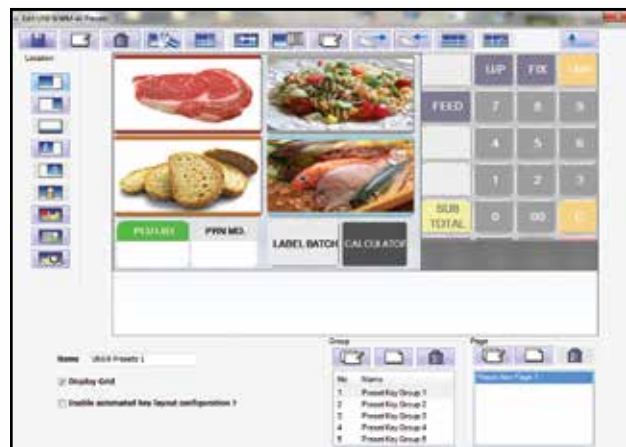
\*Software key is provided after online registration is completed



Main Screen



Log-on Screen



Uni-9 Presets

PLU List			
PLU# - 99999999		Status:Active	
Count:754			
PLU No.	Description	Sales Mode	Price
1 BANANA		Fixed Price	3.00
2 TOP SIRLOIN WHOLE		Weight	12.14
3 ROUND STEAK BONELESS		FFQ/Weight	3.98
5 SMOXED SAUSAGE		Weight	2.58
6 FILET MIGNON		Weight	2.38
7 N.Y.STRIP		Weight	14.99
8 GROUND BEEF EXTRA LEAN		Weight	1.78
9 PORTERHOUSE STEAK		Weight	1.78
Great on the Grill			
10 HAM SANDWICH		Fixed Price	4.99
12 PLU 36 - fixed price		Fixed Price	35.00
use by date check			
14 BREAKFAST SANDWICH		Fixed Price	2.69
43 MEXICAN		Weight	5.99
7 LAYER DIP			
46 HOT BARBECUE SPARE RIB PLATTER		Fixed Price	25.95
48 HOT		Weight	6.99

PLU Report