

Scale Configuration Management

Fast. Easy. Efficient.



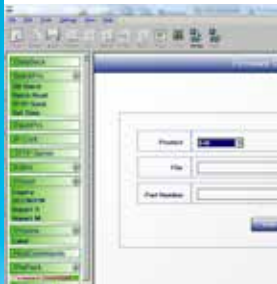
Intuitive User Interface

WinDataBack uses an easy-to-understand graphical user interface that makes data and configuration management and scale updates simple. New and inexperienced helpdesk employees can quickly get proficient with the software thanks to the user-friendly menu which features drop-down lists, option fields and check boxes.



Direct Control

WinDataBack runs on the central helpdesk employee's PC and supports the management and control of all scale-related data and configuration, whether for an individual location, a group of stores or a network of devices. Helpdesks are able to backup files, ping devices, send out release files and archive or restore data on all networked scales and prepack systems.



Optimized Data Management

WinDataBack makes it easier to ensure real-time data homogeneity, since helpdesk employees can pull and send data across all devices simultaneously. Therefore, WinDataBack is a particularly suitable tool for verifying and refreshing data files and transmitting them to newly installed scales and wrapping systems.



Effortless roll-out

WinDataBack saves time and money at store level by eliminating the need for on-site software installation and configuration data in individual branches.



WinDataBack

Scale Configuration Management

WinDataBack is easy-to-use scale configuration software which supports the central management of data and configuration relating to METTLER TOLEDO retail scales and prepack systems.

The software gives technicians real-time access to the devices installed at store level. WinDataBack is therefore the ideal tool for internal helpdesk employees. It offers them a clear and convenient way of ensuring uniformity and conformity of all the data supplied to in-store scales and saves valuable time by minimizing duplication of effort.

- **Company-wide data management and control in real time**
- **Easy-to-manage data homogeneity across all devices and stores**
- **Convenient tool for creation of backup files as well as for data archiving and restoration**
- **Rapid transmission of existing data files to newly installed devices**
- **Helpdesk employees require minimum training thanks to intuitive user interface**

Technical data

WinDataBack

Operating System

Windows XP®, Windows 7®, Windows 10®

CPU

133 MHZ Pentium (minimum)

Memory

RAM: 2 GB

Hard disk: WinDataBack requires 41 MB of disk space

Graphics

VGA

Supported Devices

UCCW/PW, Impact S, Impact M, UC COOP, SmartTouchMaster/STEM, UCST, 8461, 8460 Satellite, 8450 Satellite, 8450 Stand-Alone, 8361

Connections

Arcnet, Ethernet

Master Data

Configuration of all scale-related data: stores, departments, categories, PLUs, ingredients, COOL, barcodes, tare, VAT, pricing, text

Maintenance/Service

Operators, code, presets and label configurations

Functionalities (not exhaustive)

Customizable presets layout, send/retrieve label formats, firmware updates, registration of all changes, immediate data distribution, multi-user capability

Languages

English

Documentation

PDF file

Further information

Please contact your METTLER TOLEDO system consultant for additional information about scale management software products.



WinDataBack enables technicians to allocate products to specific preset keys on the touchscreens of all in-store scales or groups of scales.



Item-level master data such as NutriFacts, COOL and PLU details can be verified and updated quickly and easily using the Editor function within the WinDataBack software.



WinDataBack enables the central helpdesk to view and alter all PLU-based weighing settings on the scales in the stores.



Check boxes enable helpdesk employees to select which data they wish to backup, archive or restore.



With WinDataBack, helpdesk employees can access and alter detailed information on any networked weighing device.



WinDataBack supports the exact specification by scale or data type when scheduling backups or transmitting data to any weighing device installed within the network.



ISO 9001 Quality management certification
ISO 14001 Environmental management certification

Subject to technical changes.
© 6/2017 Mettler-Toledo, LLC
Printed in USA RDB020.1E

www.mt.com/retail

For more information