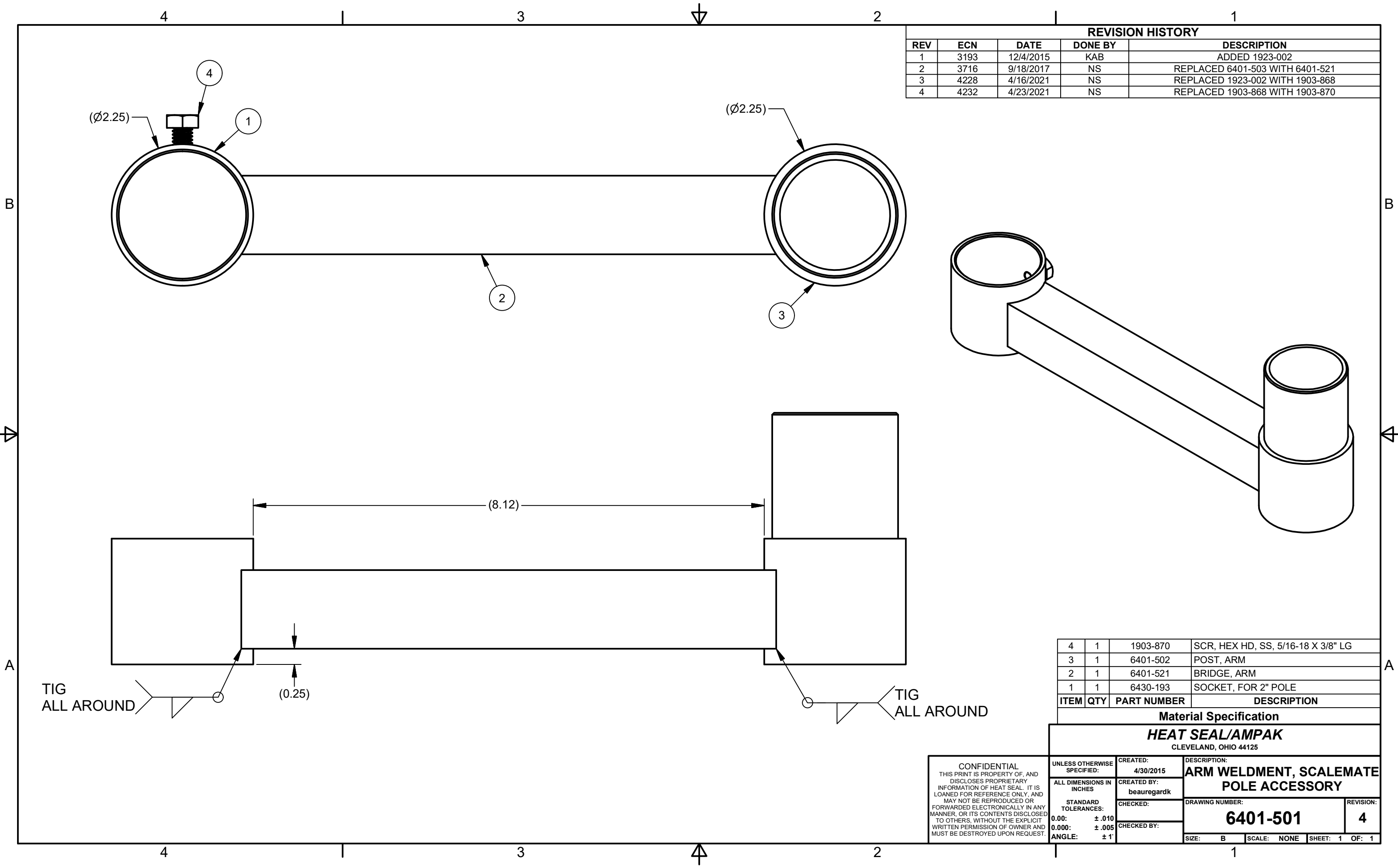


REVISION HISTORY				
REV	ECN	DATE	DONE BY	DESCRIPTION
1	3193	12/4/2015	KAB	ADDED 1923-002
2	3716	9/18/2017	NS	REPLACED 6401-503 WITH 6401-521
3	4228	4/16/2021	NS	REPLACED 1923-002 WITH 1903-868
4	4232	4/23/2021	NS	REPLACED 1903-868 WITH 1903-870



ITEM	QTY	PART NUMBER	DESCRIPTION
4	1	1903-870	SCR, HEX HD, SS, 5/16-18 X 3/8" LG
3	1	6401-502	POST, ARM
2	1	6401-521	BRIDGE, ARM
1	1	6430-193	SOCKET, FOR 2" POLE

Material Specification

HEAT SEAL/AMPAK
CLEVELAND, OHIO 44125

<p>CONFIDENTIAL THIS PRINT IS PROPERTY OF, AND DISCLOSES PROPRIETARY INFORMATION OF HEAT SEAL. IT IS LOANED FOR REFERENCE ONLY, AND MAY NOT BE REPRODUCED OR FORWARDED ELECTRONICALLY IN ANY MANNER, OR ITS CONTENTS DISCLOSED TO OTHERS, WITHOUT THE EXPLICIT WRITTEN PERMISSION OF OWNER AND MUST BE DESTROYED UPON REQUEST.</p>	<p>UNLESS OTHERWISE SPECIFIED:</p>	<p>CREATED: 4/30/2015</p>	<p>DESCRIPTION: ARM WELDMENT, SCALEMATE POLE ACCESSORY</p>	
	<p>ALL DIMENSIONS IN INCHES</p>	<p>CREATED BY: beauregardk</p>	<p>DRAWING NUMBER: 6401-501</p>	
	<p>STANDARD TOLERANCES:</p> <p>0.00: ± .010 0.000: ± .005 ANGLE: ± 1'</p>	<p>CHECKED:</p>	<p>REVISION: 4</p>	
		<p>CHECKED BY:</p>	<p>SIZE: B</p>	<p>SCALE: NONE</p>